

bestaande garage

1700

190

10

155

15

200

15

370

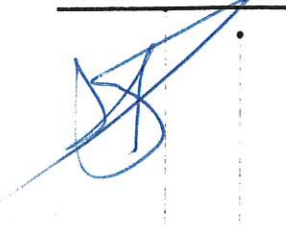
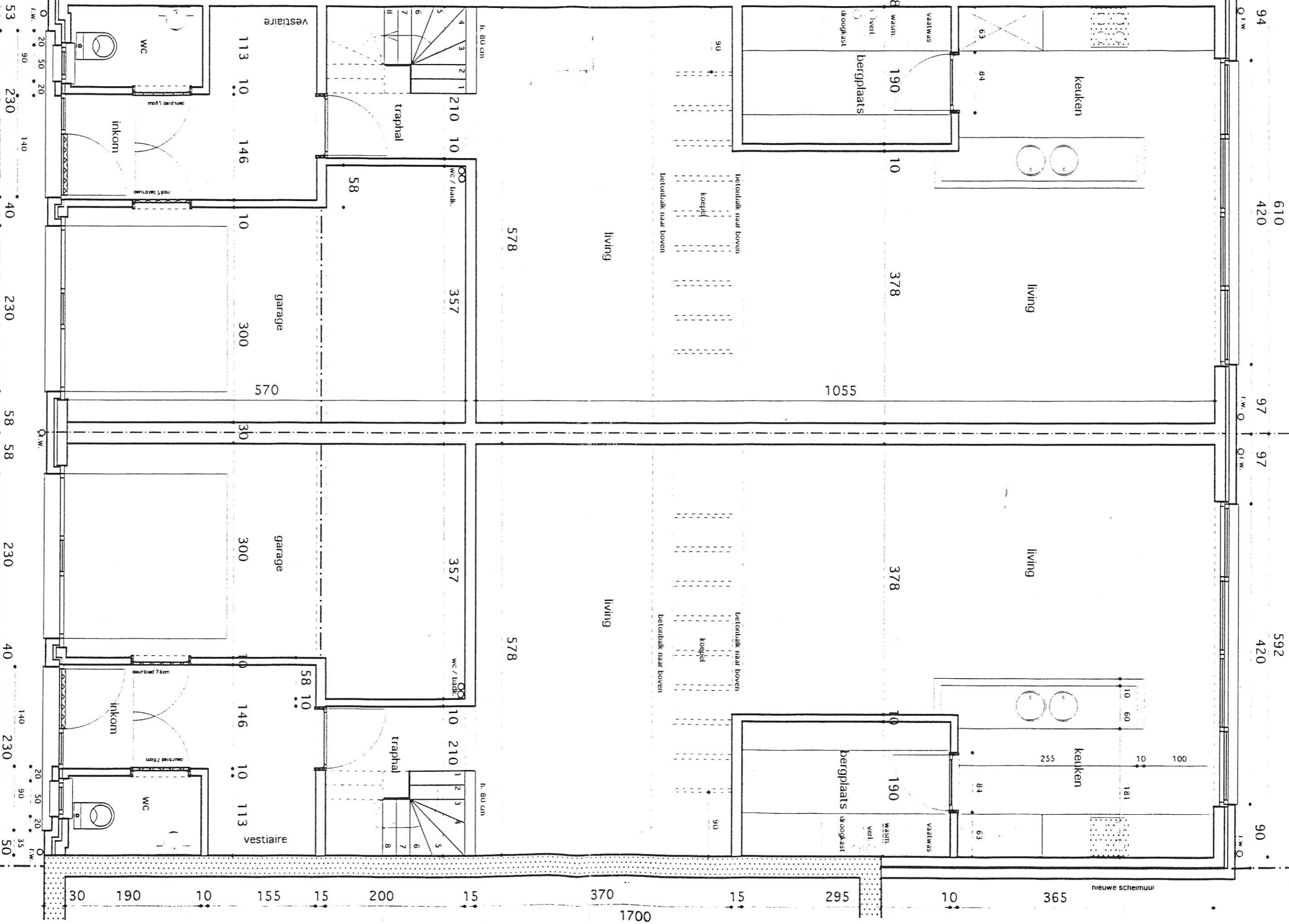
15

295

10

365

30



plan gelijkvloers

1203

592

58

58

230

40

230

20

50

35

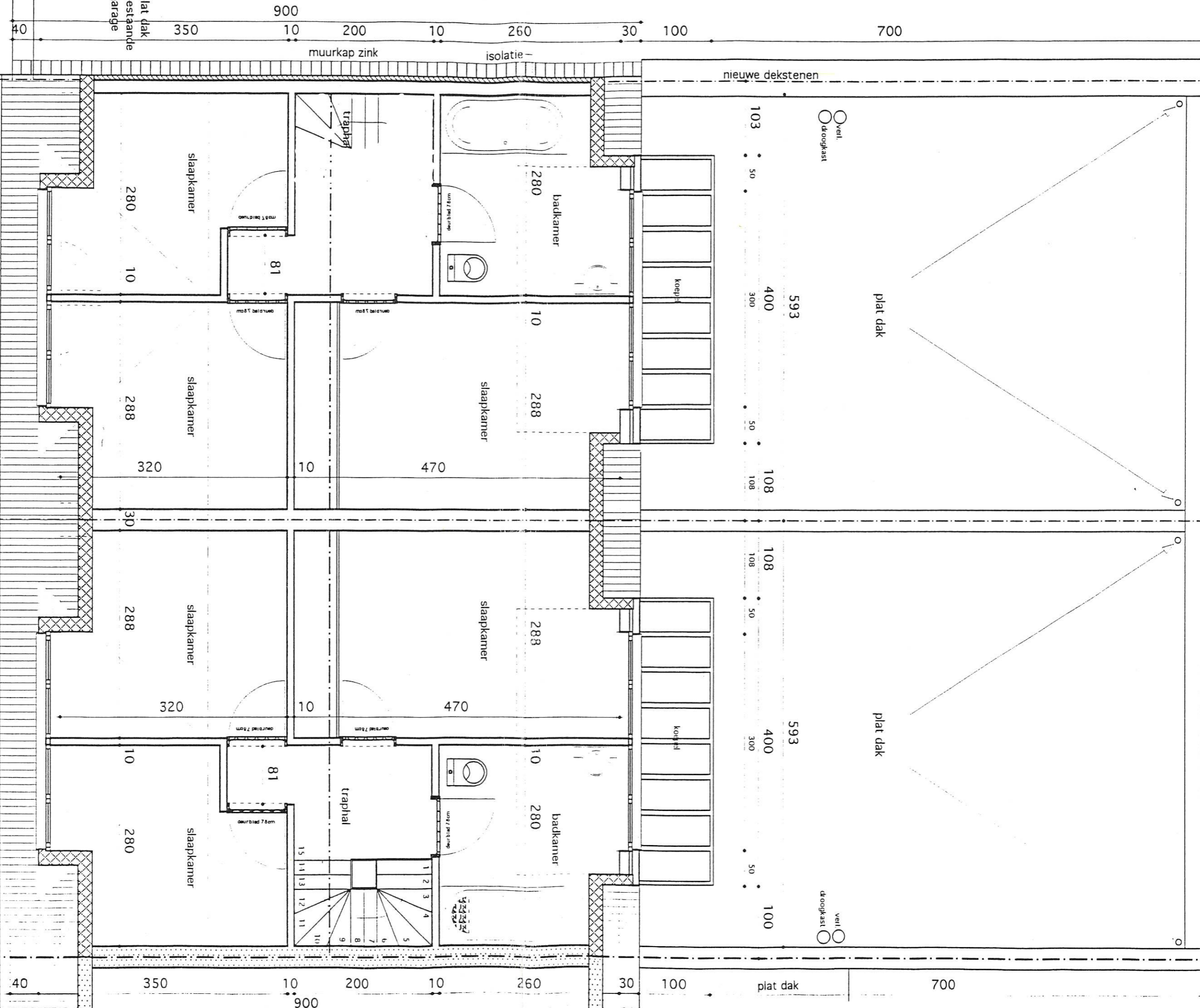
50

94
610
420
97
97
592
420
90

30 190 10 155 15 200 15 370 15 295 10 365 1700

nieuwe scheimuur

1200



plan verdieping

